

# Congo Basin Forest Partnership

Consultative Committee

Brazzaville, Oct 31, 2008

## Landscape Management Progress

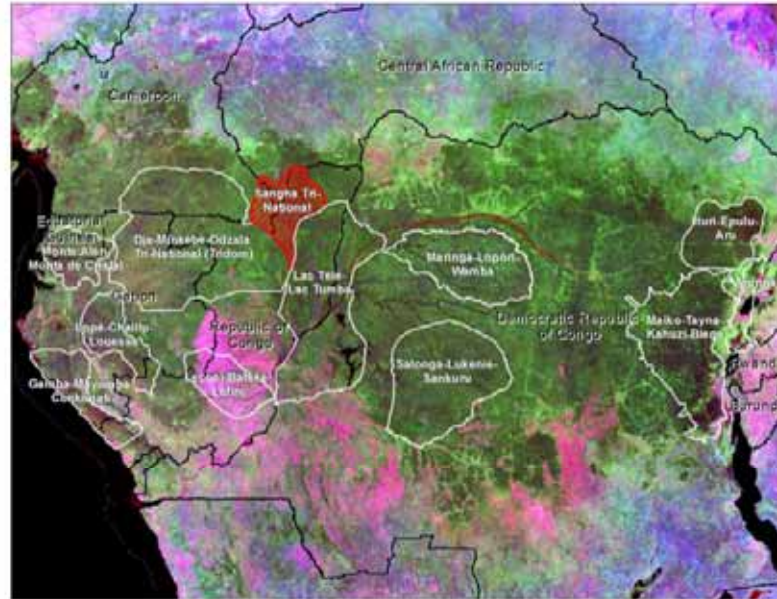




# CARPE Information Management Tool

- Landscapes
  - Monte Ailen-Mont de Cristal
  - Oemba-Moyumba-Conkouati
  - Lope-Chailu-Louesse
  - Dja-Odzala-Minkébe (Tidom)
  - Sangha Tri National (TNS)**
  - Lincon-Baké-Lefra
  - Lac Tele-Lac Tumba
  - Salonga-Lukenie-Sankuru
  - Maringa-Lopori-Namba
  - Maiko-Tayna-Kahuzi-Biega
  - Bur-Epuku-Aru
  - Virunga
- Macrozones

Select a Landscape by clicking on the image below or the list to the left



Landscape : **Sangha Tri-National (TNS)**

- Consortium Team
- Data Collection
- Public Participation
- Land Use Planning
- Activity Budget
- Macrozones

### Consortium Team

Consortium Lead Organization: World Wildlife Fund  
Consortium Members: Wildlife Conservation Society World Wildlife Fund  
Landscape Leader: Leonard Usongo [lusongo@wwfcarpe.org](mailto:lusongo@wwfcarpe.org)



CARPE is an initiative of USAID. This website is hosted by University of Maryland.  
The information provided on this Web site is not official U.S. Government information and does not represent the views or positions of the U.S. Agency for International Development or the U.S. Government.  
[Contact Us](#) | [CARPE Home](#)



## CARPE Information Management Tool

### Landscapes

#### Macrozones

- Gamba Complex of PAs, incl Loango and Mouk. NPs
- Loango NP
- Moukalaba Doudou NP
- Mayumba NP
- Ndongo Lagoon CBNRM
- Communities on periphery of Mayumba NP
- Iguela Lagoon
- Shell Gabon Oil & Gas Exploration
- CBO Logging Concession
- Ndongo Department
- Conkouati Douk NP
- Conkouati Douk Community Reserve
- Madingo-Kayes Community zones around CD NP
- Logging Concessions
- Forest Plantations
- Oil & Gas exploration

Select a macrozone from the list to the left



**Landscape:** Gamba-Mayumba-Conkouati

**Macrozone:** Gamba Complex of PAs, incl Loango and Mouk. NPs

Data Collection

Public Participation

Land Use Planning

Back to Landscapes

### Land Use Planning

#### Land Use Planning Status

Convened (%):

Designed (%):

Adopted (%): 25.0

Implemented (%):

#### Land Use Planning Documents

##### Strategy Document

[WWF 2007 SMP Strategy](#)

[WWF 2007 PA Current Status and Proposed Configuration](#)

##### Management Plan

No Documents Available

##### Macrozone Maps

[WWF 2007 Cybertracker Mapping Results](#)

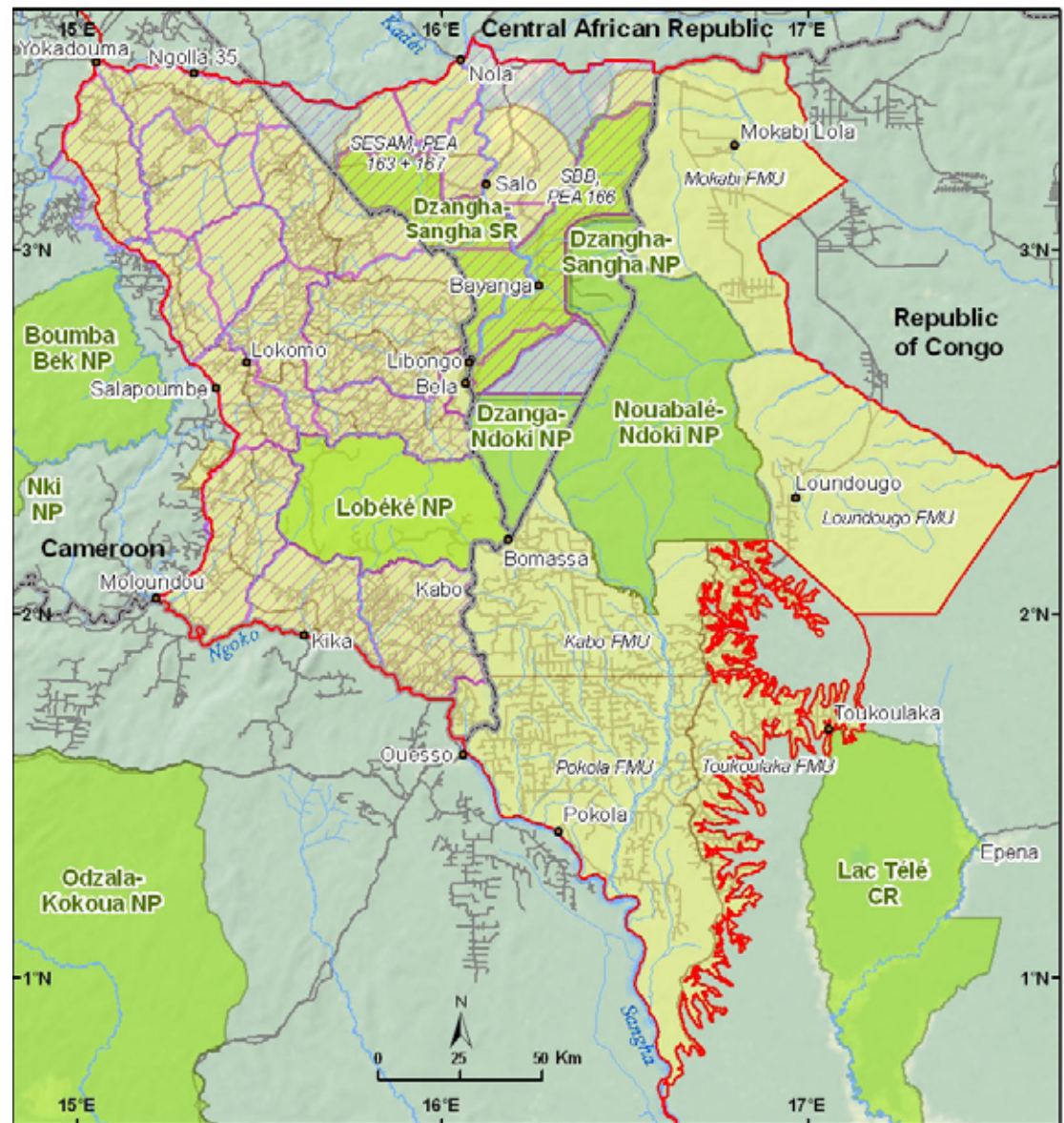
# Macrozones in Gamba-Mayumba-Conkouati Landscape




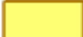
## LS 2: Gamba-Mayumba-Conkouati Landscape

-  Protected Areas
-  1. Iguela lagoon CBNRM
-  2. Ndougou lagoon CBNRM
-  3. Ndougou Department CBNRM
-  4. Community fisheries zone
-  5. Ecodevelopment zone
-  6. 5 km buffer zone
-  7. Madingo CBNRM
-  Petroleum ERZ
-  Logging Concessions

# Macrozones in Sangha Tri National Landscape



## LS5: Sangha Tri-National Landscape

-  Hunting Concession
-  Logging Concession

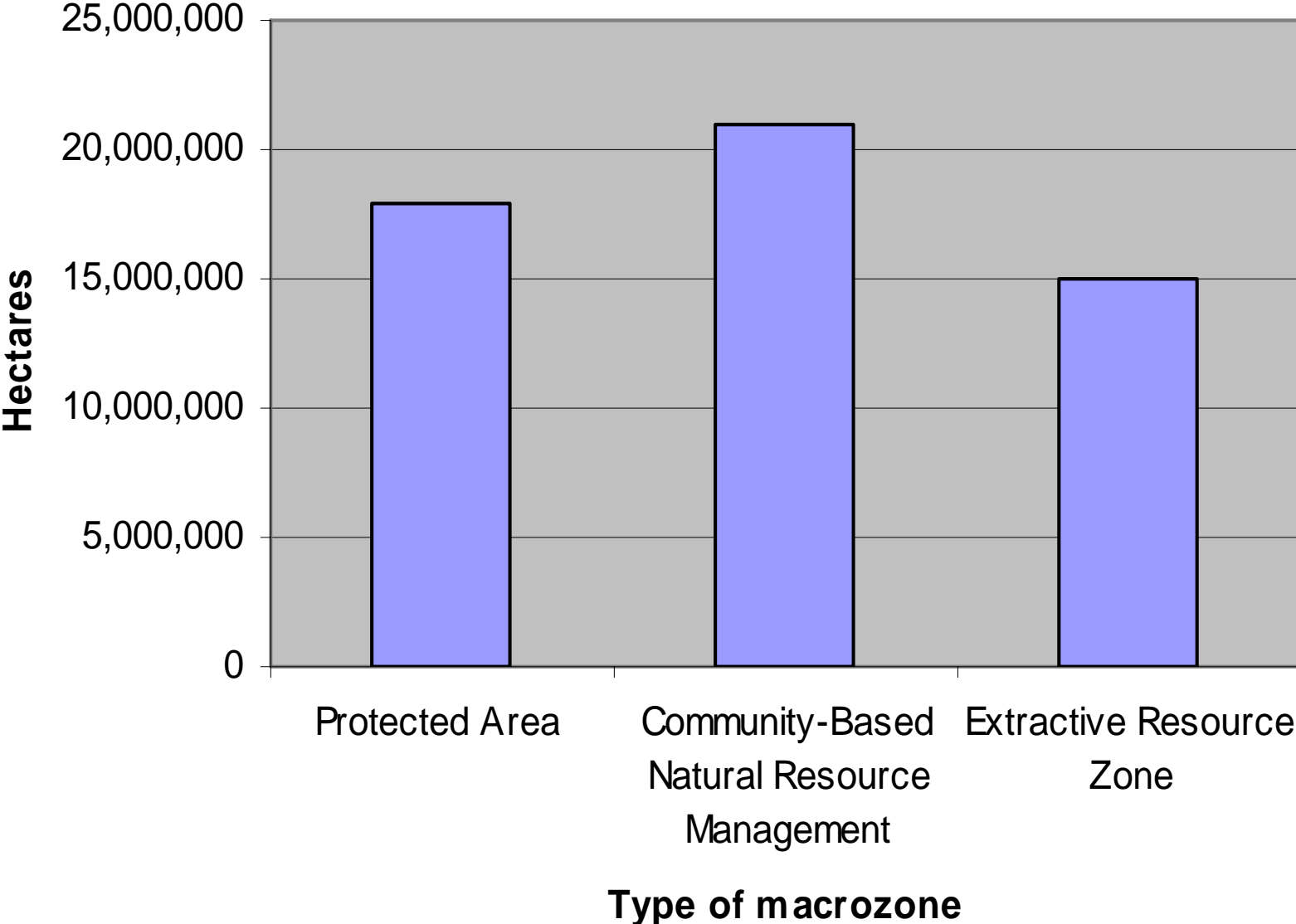
# Total Area

- Total area for all landscapes in FY 2008:  
82,351,995 hectares
- Total area under improved management for all landscapes:
  - in FY 2007: 49,040,835 hectares
  - in FY 2008: 53,910,172 hectares

# Macrozone number and area in FY 2008

<b>MZ type</b>	<b>No. of MZ</b>	<b>No. of Ha</b>
All	147	53,910,172
Protected Area (PA)	37	17,883,079
Community-Based Natural Resources Management (CBNRM)	69	21,040,366
Extractive Resource Zone (ERZ)	41	14,986,727

# Number of hectares per type of macrozone in FY 2008

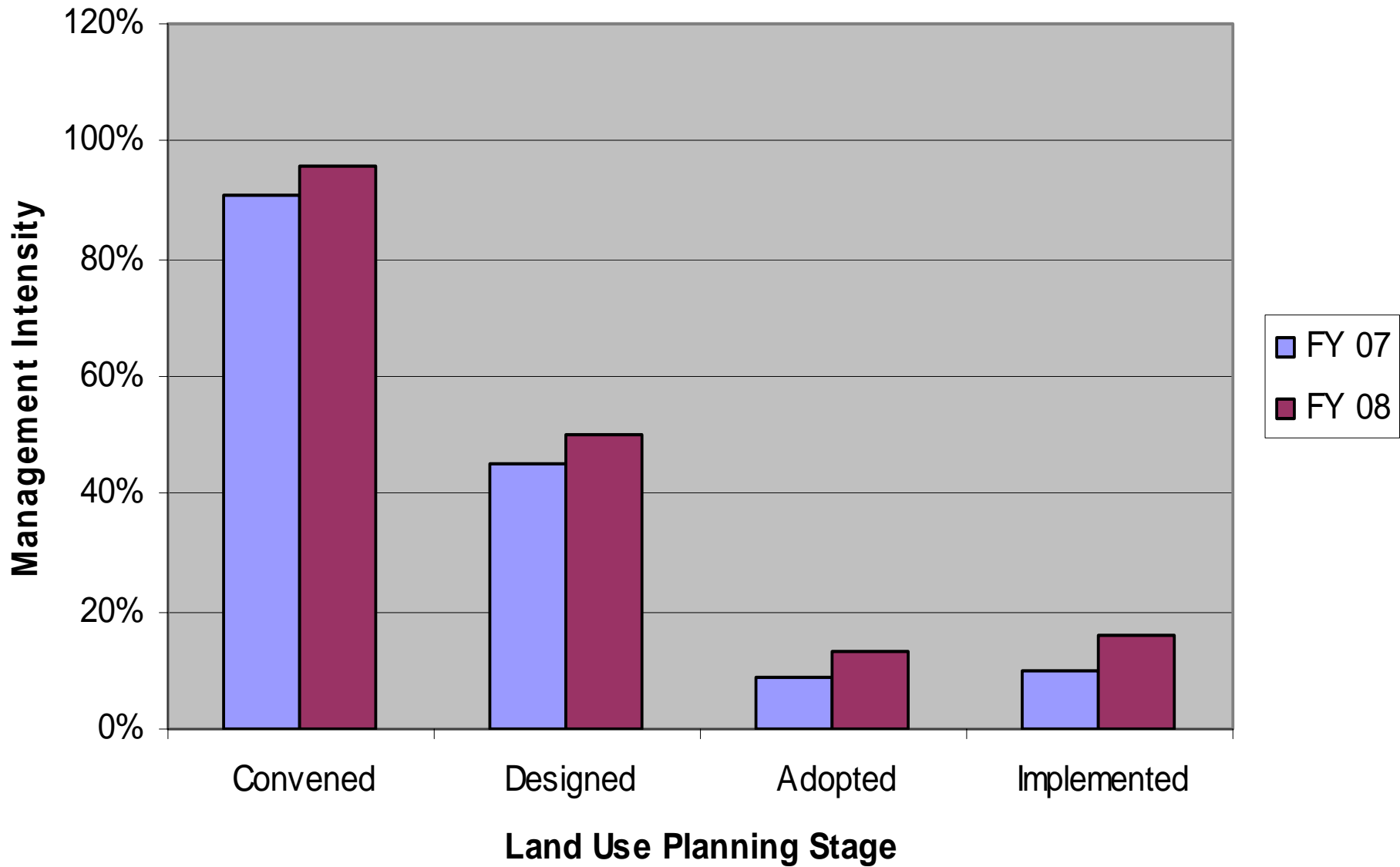




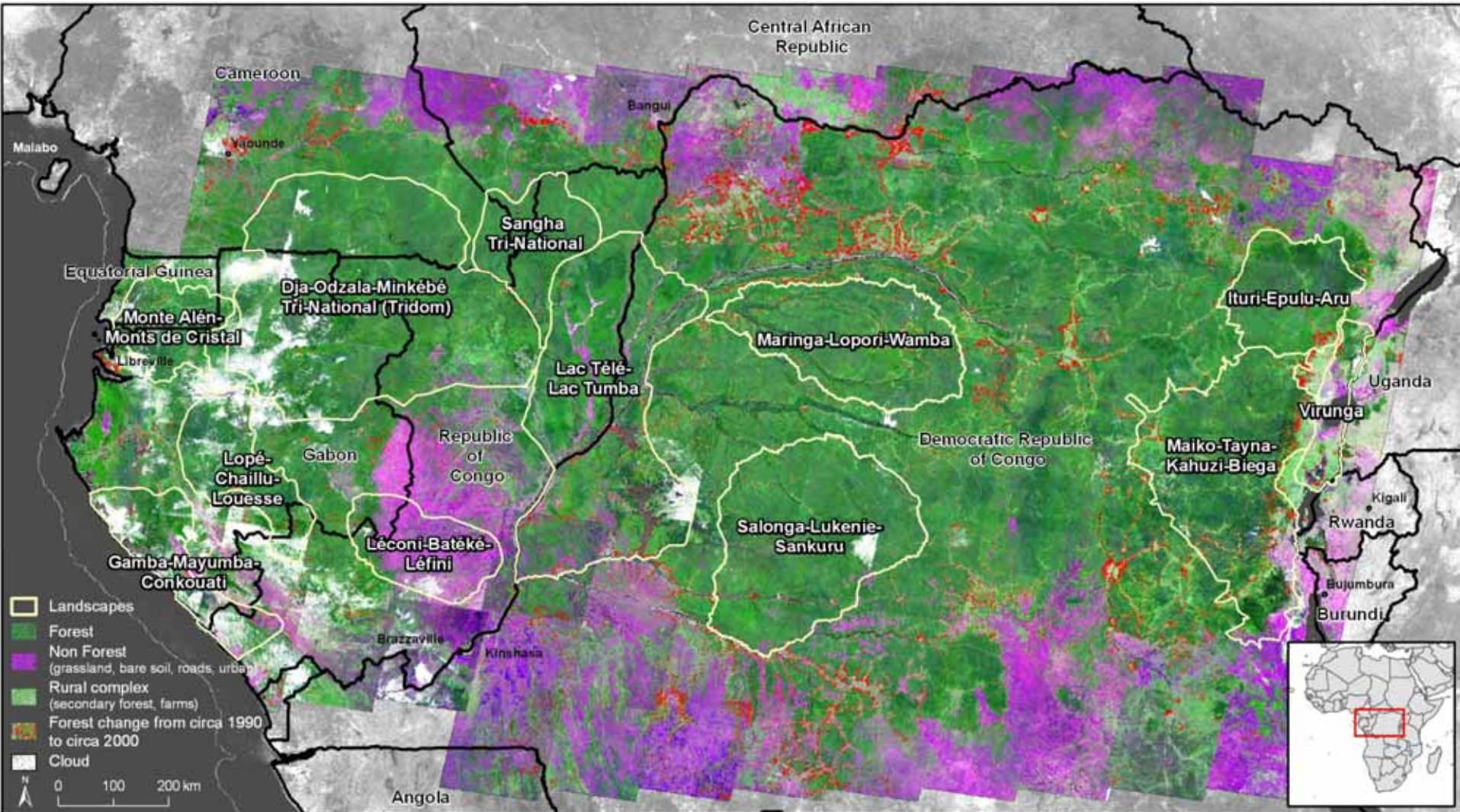
# Management Intensity of macrozone aggregate

<b>Stage</b>	<b>FY 07</b>	<b>FY 08</b>
Convened	91%	96%
Designed	45%	50%
Adopted	9%	13%
Implemented	10%	16%

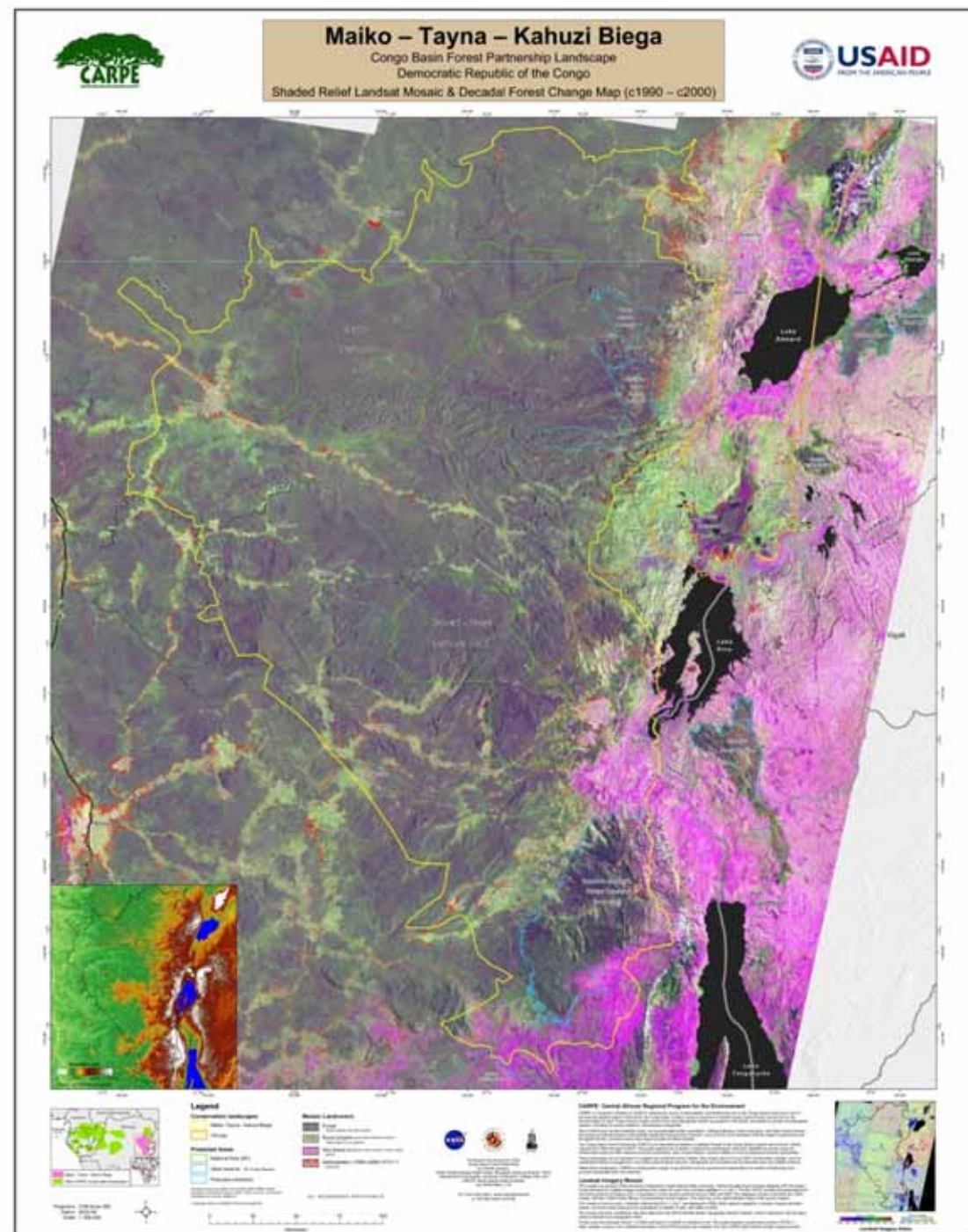
# Management intensity in FY 2007 and 2008 by stage



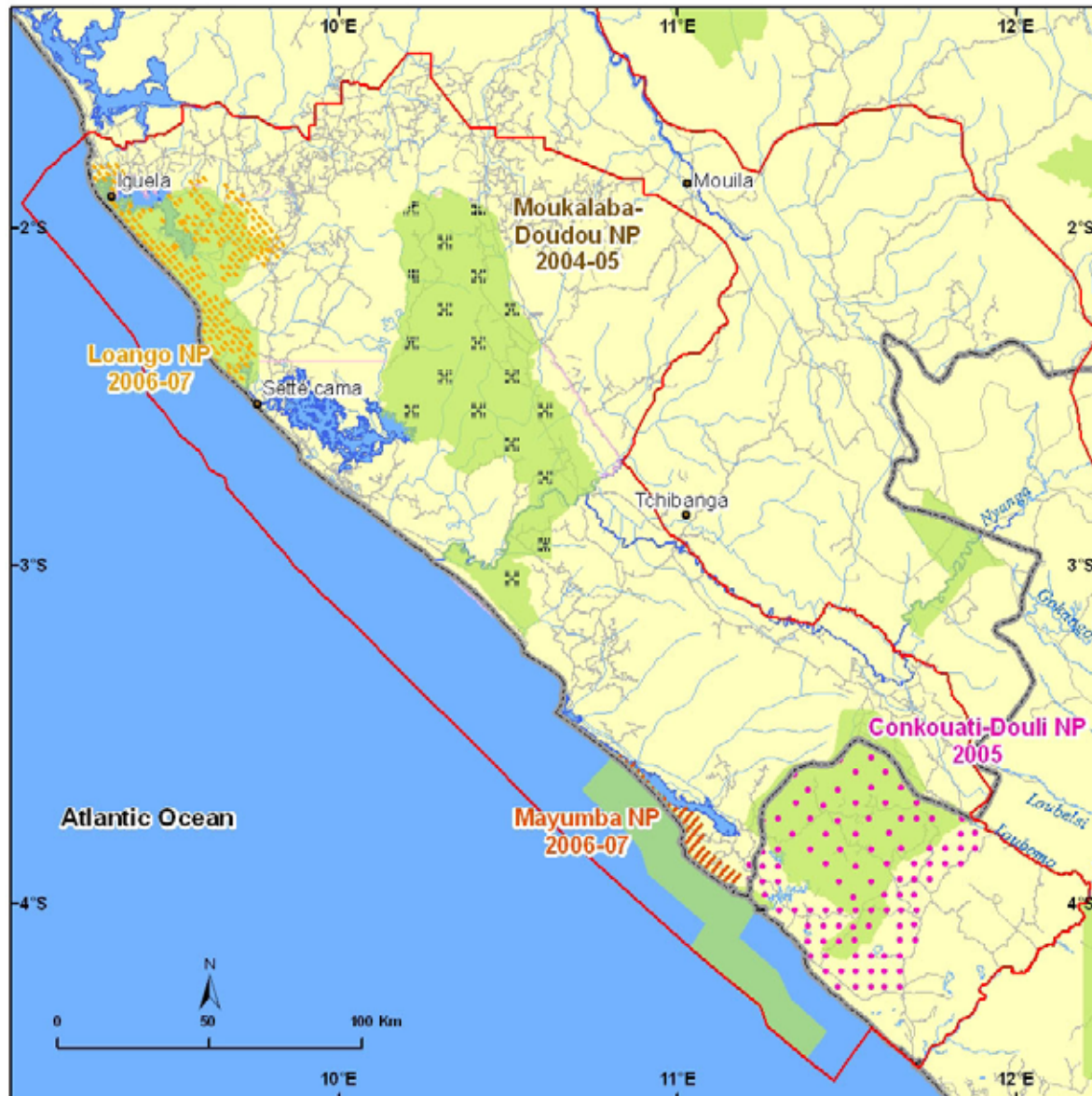
# Forest cover change for the Congo Basin from 1990 to 2000



Forest cover change (in red) from 1990 to 2000 for the Maiko-Tayna Kahuzi Beiga Landscape



# Location of biological surveys for Gamba-Mayumba-Conkouati Landscape from 2004 - 2007



# Location of biological surveys for Sangha Tri National Landscape for 2002 - 2007

